



## Commodore's Corner, Pete Stubler

I want to thank everyone who joined us at the annual meeting in January. A new board (ok mostly old board) was elected and a lively discussion was made regarding fees and membership caps. In light of inflation and increasing costs associated with insurance, rent, repairs, and new services like WiFi, a modest 3% increase in most fees was approved by the membership. This will amount to about \$18 on average per membership. Our current membership cap of 130 members is set by the board. Significant concern was expressed regarding the ability of the club to accommodate more members. However, most of the members in attendance agreed that the board should use its discretion to consider expanding the cap as the situation warrants. The social gathering that followed was filled with wonderful food shared by members, geocaching hikes, and lots of time catching up with friends.

This summer, I would like to see expanded attention to safety on the water. I would like to encourage small craft sailors to carry marine radios while out on the lake. To that end, I have found a vendor who may be willing to provide a bulk order discount. Details will be discussed at **Spring Cleanup, APRIL 29**. I would like to encourage all boats to carry an extra PFD while on the water (something that I have often forgotten to do). I would also encourage our larger monohull sailors to take advantage of courtesy safety inspections by the Coast Guard. We all look forward to a fun and safe sailing season.

Thanks,  
Pete





## Vice Commodore, Rich Seyfried

Ahoy PMI-ers,

A check of the PMI property today (2-7-2023), looks pretty normal for a substandard Winter without lots of snow. With that said the beach is a mess but not that bad. A couple of Nor-Easter storms will load the beach with plenty of debris before Spring clean-up... nothing we can't handle. The coastal grass berms are doing their job along with the snow fence. I checked the Bath House holding tank and found it half full, so the pump was energized to drain the tank. Buildings look in good shape. We will need to clear the roof deck of branches on the boat sheds. Boats all seem to be in their correct spots and upright, which is great news. They all seemed to survive the wind storms we have had. Now for the boat ramp saga. We have not heard back from the DEC. This is normal operation for a government entity of this size, but in their defense, they handle a huge area of Western New York. I checked the boat ramp wall and it is still listing at a 20-degree angle and has not moved since early December 2022. We did pile a bunch of sand bags at the center point of the wall to aid in wall protection. Some good news - we should be able to launch boats with the wall as it is, and if it does not shift further. Due to water levels, we might need to wait until next fall to replace the boat ramp dock wall. So, I will be asking for ideas and help to stabilize the wall to prevent further collapse, I know what you are thinking, another temporary band-aid, but this is what we have to live with for a while. Stay safe. Some real good news: Spring is about six weeks away.

Rich



## Treasurer, Al Gould

Treasurer's report:

Jody and I are in the Keys getting our ASA 101, 103 and 104. It's epic!





## Secretary, Deborah Arndt

**A great start:** It is great to start the new year with a positive step forward as demonstrated by PMI's January 28th Annual Meeting and Cabin Fever Event! It was a wonderful turnout, successful meeting, and enjoyable event thanks to so many. Among them, the Board of Directors and Darlene Grey, Club Social Chair, for her inspired leadership in planning a memorable mid-winter event, and all the volunteers who helped. I am proud to be serving a second term as Secretary. In this capacity, I also liaise with social and party permit functions, serve on the nominating committee and help out on the landscaping committee. I also update Member Information available on our website.

**Volunteer:** To assure another great year for PMI, your volunteer participation is needed! Apart from your participation as a Duty Officer, please select at least 2 additional ways to volunteer. You can select these on the 2023 Membership Form. Each year, volunteers are especially needed to help with spring and fall clean-ups, social events, and small repairs. At the **Spring Cleanup on April 29**, you can sign up for scheduled events and projects that match your availability.

**Member Information:** Especially helpful for newer members, but useful, too, for all members, please check out our guide, **Member Information 2023**, on our website. Here is information to help you navigate Club rules (and best practices) for members, Club By-Laws, ways to volunteer, events, Club history, Board Member and Committee Chair contacts, and more!

Deb

### **From the Board, kudos and thanks!**

We wish to express our gratitude to outgoing Commodore, **Eric Baller**, for his service contribution over recent years on the Construction Committee, as Vice Commodore, and most recently as Club Commodore. Eric's outstanding service has made a true difference for PMI.



## Membership, Rich Bilsback



Send all forms and checks payable to Pultneyville Mariners Inc. (PMI) postmarked by March 31<sup>st</sup> (or by March 1<sup>st</sup> for Fee Discount) to: **Richard Bilsback, PMI Membership, PO Box 181, Pultneyville, NY 14538**

Memberships not renewed by April 1<sup>st</sup> are subject to potential late fees set by the Board. Memberships not renewed by May 1 are canceled, making room for PMI Waitlist.

Anyone interested in being added to the PMI Waitlist should send a request through the Sailpmc.com Contact page...

<https://sailpmc.com/contact/>

Rich



## From the Dockmaster, Linda Rohlfing

Looking forward to opening our new 2023 season, I want to remind everyone to make sure they fill out the **membership form completely**, paying attention to the needed **boat/car stickers and shed assignments**. This will help me make sure our records are accurate.

Reach out to me via email ([linda.rohlfing19@gmail.com](mailto:linda.rohlfing19@gmail.com)) about any requests to change, add, eliminate any shed, dry sail or dockwall assignments or any concerns.

**BOAT LAUNCH RAMP**....we are uncertain if there will be any issues when launching your sailboats this coming season due to pending repairs. We will keep you all posted.

**DOCK WALL**...Our dock wall is expected to have full occupancy. this season. We have additional cleats on order . **We will need volunteers from our**

**maintenance committee to mount these cleats once they arrive. Let us know if you can help.** These cleats will be added to the north dock wall to allow for more flexibility and secure docking.

**Sheds...**I will need assistance from the maintenance committee to add rollers and repair some shed spaces. **Let me know if you can help.**

New **membership cards** will be handed out during our Spring Clean up on Saturday, April 29th. The lock assignments take effect immediately after Spring clean up. In the meantime, all locks remain unchanged EXCEPT the bathrooms. They have winter locks because water has been turned off. The bathrooms will officially reopen for use on April 29th.

**Trailer Storage:** Unfortunately, the off site trailer storage lot is not available due to construction by the town. As a result, all trailers will be stored on our premises.

If you have any other questions or concerns, I welcome you to contact me via email ([dockmaster@sailpmc.org](mailto:dockmaster@sailpmc.org) or [linda.rohlfing19@gmail.com](mailto:linda.rohlfing19@gmail.com)) or call / text 585-766-9073 to leave me a message



## Duty Officer Coordinator, Jessica Shaver

I hope everyone is having a safe and enjoyable off-season. Before you know it, beach season will be here! As a part of membership responsibilities, all members (who are not board members) are required to sign up for a duty officer shift. We will be using Sign Up Genius again this year to do sign ups. I will be available at Spring Clean-up to help our members navigate the sign-up process. The link to the sign up will be published in the March and/or April Mainsheet and emailed to members as well.

Please be sure to put whatever day you sign up for on your calendars. Members who do not sign up or no-show for the day they signed up for will be charged a non-participation fee per PMI policy.

Thank you,  
Jessica Shaver.  
315-589-2101



## Social Events, Darlene Grey

Hello to all, the weather cooperated January 28 for our Cabin Party and Pot Luck we had a great turn out. It started out with Swedish meatballs, soups, Chili, pulled pork sliders along with Barbecue beef sliders and delicious desserts.

Big Thank you Jim and Carol May for sharing their bike trip to Portugal ~ it was beautiful. Thank You Anne Fiorino for leading a Geo Caching hunt through the park. Also a Big Thank you to those who helped set up as well as clean up after the party ~ you are so appreciated.

Darlene

For more information about the PMI Social Calendar or to volunteer at any event, contact the PMI Social Chair at [darlene\\_grey@yahoo.com](mailto:darlene_grey@yahoo.com)

Details and Specific Dates as events are confirmed:

### **Spring Cleanup - Saturday April 29**

Spaghetti dinner / MAY

Fathers Day Breakfast / JUNE

Fourth of July PotLuck dinner / JULY

Chicken French Dinner / JULY

Commodore's Challenge at PMI / JULY

Steak and Corn Roast / JULY

Burgers and Hots / AUGUST

Family Game Night

Ice Cream Social / AUGUST

Sandcastle Competition

Wing Fry / AUGUST

Oktoberfest / SEPTEMBER

Fall Banquet / NOVEMBER

Friday Happy-ness starts as soon as weather permits  
**Don't miss any fun, stay tuned for next events...**

## Interesting Member Find:

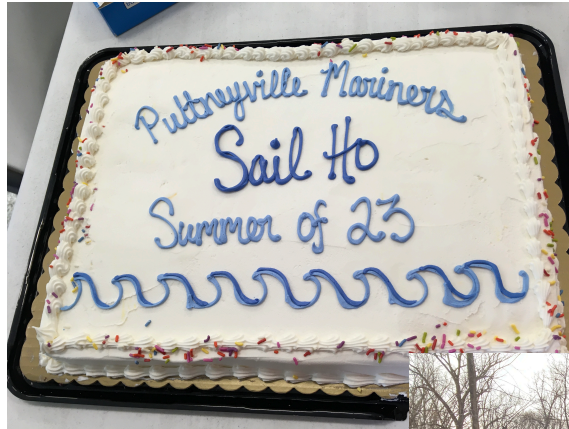
Karen Seyfried, while looking for beach glass, found these two coins -

Look closely, they both picture Sailboats





# Cabin Party & Pot Luck



Great food...  
and Friends!



Geo-caching with Annie



## Member at Large,

Caroline Cooney

if anyone has any PMI questions or concerns to email me at [carolinecooney72@gmail.com](mailto:carolinecooney72@gmail.com) and I can help resolve them. Thank you.

*Thanks* to all of you who have been posting, commenting and liking/ sharing on <https://www.facebook.com/pages/Pultneyville-Mariners/187684157934775>) and Instagram, Nick Harkola, [nharkola@gmail.com](mailto:nharkola@gmail.com)

## Website [SailPMC.com](http://SailPMC.com)

“Members Only” page password is  
PMC



## WebMaster, Jen Stubler

*Be Checking the Website for:*

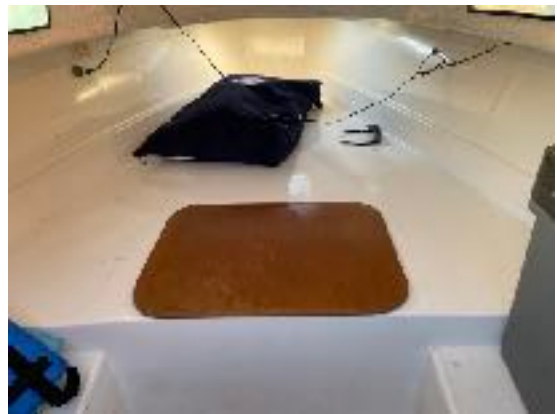
- Party Permit process. Minor changes to procedure will be posted on web site and Laura Grey, Party Permit Chair, will post tracking log on Members Only page
- Final Duty Officer roster on Members Only page and update the Duty Officer and Sail Patrol Duties
- Social calendar on the web site Members Only page

**Soon....we'll be sailing**



## For Sale by Members:

For Sale. 1974 Newport 17. New lines, new custom cabin door, new keel winch, teak refurbished and re-sealed. Trailer included. Has a main sail and Jib. New foredeck bag. New sail slugs on main sail. Ready to sail. Located at PMI on the wall. Motor and gas can are NOT included. \$2500.00 or best offer. Jessica and Dale Shaver 315-589-2101



## Order hats, sweatshirts, polo shirts etc...

**with the Pultneyville Mariners logo on them.**

The use of the Pultneyville Mariners logo is cleared with Instant Monogramming, to let anyone who is a member of PMI use the logo on the items that they want. Just show your membership card

**Instant Monogramming, Inc.**

1150 University Avenue, Bldg 5, Suite 9  
Rochester, NY, 14607





## ...and a Note from the Mainsheet Editor

Any items for publication should be sent to me as you think of it - I will store and use in the next Mainsheet. Also, send jpg photos to Caroline Cooney [carolinecooney72@gmail.com](mailto:carolinecooney72@gmail.com) who will be archiving them for use at our annual banquet. Don't worry about deadlines, just send to me at [c4js17@yahoo.com](mailto:c4js17@yahoo.com) as you think of the wonderful ideas that you want to share with the membership. It is my hope that COMMUNICATION will help to grow the sense of community that PMI has always fostered. *Carol May*